

FIG. 4.—Seyfert's Sextet photographed to limiting magnitude ~ 24 on a IIIa-J plate with the 4 m KPNO telescope. Field of view is $\sim 1^\circ$ in diameter.

ARP (see 474, 81)

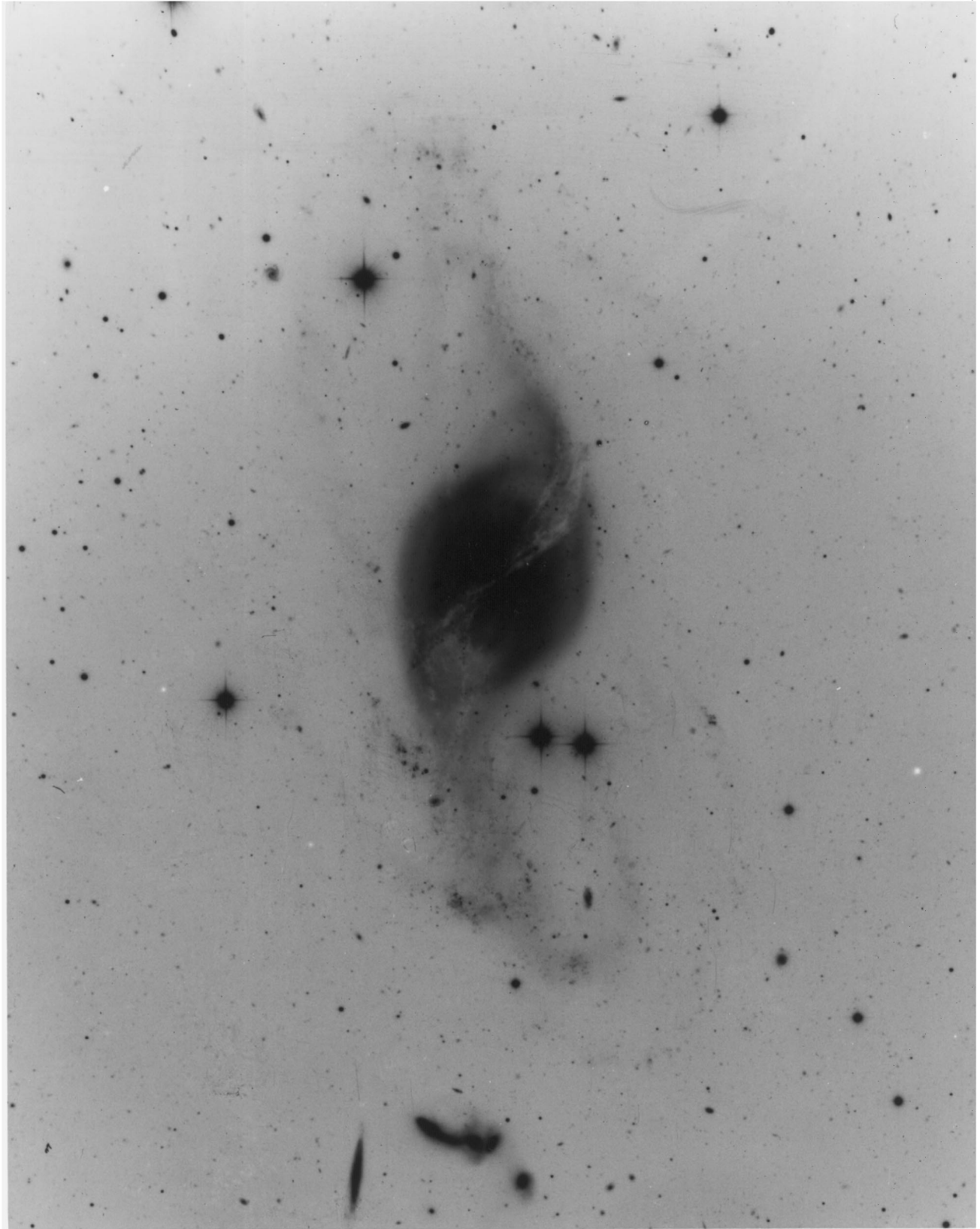


FIG. 6.—A limiting magnitude photograph with the Palomar 200 inch of NGC 3718 and VV 150 (the latter being Hickson group number 56). The group of high surface brightness and Seyfert galaxies appears to be strongly deforming the spiral arm of the large, low-redshift SB spiral.

ARP (see 474, 81)